

www.TheBuffaloWoolCO.com



Bison Down Wrist Warmers

Wrist Warmers

design by Inna Voltchkova

Wrist Warmers knitted in rounds along with traditional lace knitting techniques and Orenburg Style Lace motifs – yarn over and knit two together and Large Strawberry motifs and “teeth” lace border. Unique construction -no wrong side.

materials:

lace yarn
90 -120 yards
www.TheBuffaloWoolCo.com

needles:

US size # 1 /2.5mm set of 5
double pointed needles

gauge: 15 sts and 20 rows =2
inc(5.1 cm) in patt

notions:

Small Stitch holders
Tapestry needle
T- pins for traditional blocking
(optional).

NOTES

Wrist Warmers knitted in rounds.

The “teeth” of warmers is worked in garter–stitch lace, with the blank squares of the chart representing knit stitches on right–side and wrong–side rows.

Slip edge stitches as if to purl with yarn in front (sl1 pwise wyif).

INSTRUCTIONS

Using the long-tail cast-on method CO 7 sts over 2 needles.

Remove 1 needle from the CO sts. Work set-up row and Rows 1–89 of Lace Border (lower border) “teeth” following chart, working all WS rows (not shown on chart) as: sl 1 pwise wyf, k to end. K 11 complete “teeth,” ending with Row 89, and place 8 live sts on small holder. **Do not cut yarn.**

Pick up 7 sts from the base of the 7 CO sts by putting a needle under each loop. Transfer these sts to a small holder; they will be grafted tog with 8 live sts later.

With another needle and starting at the CO edge, pick up 46 sl sts along the straight edge by putting the needle into the front of each loop (shown as red Xs on chart). K across these sts by knitting in the back of each st. This gives the first set-up row a crossed patt.

The second set-up row: divide sts evenly onto 4 needles and join for working in rounds and *in the same time* decreasing 2 sts by knitting 2 times p2tog (see chart). You have now 44 sts for pattern (11 sts on each needle).

Work a “Large Strawberry” pattern Rows 1–46 of chart. You have 4 “Large Strawberry” around and 5 “Large Strawberry” high (if you wish you can have 7 “Large Strawberry” high). **Do not cut yarn.**

Lace border (top border)

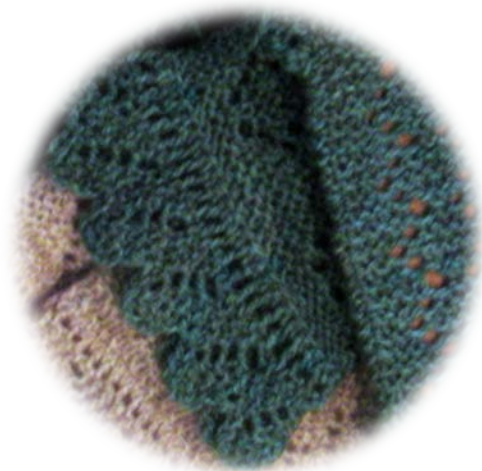
Using the backward-loop cast-on method, CO 7 sts over 1 needle. Work set-up row and Rows 1–89 of Lace Border (top border), joining the last border st with 1 live st of center section at the end of each RS row; sl this “k2tog” stitch back onto left-hand needle. Work all WS rows (not shown on chart) as k to end without slipping the first st (this st is already on right-hand needle).

Note: Work set of short-row by working the next RS row to 1 st from end, turn (do not k last st tog with body st), work WS row.

Continue to k 1 body st tog with 1 top border st and slipping this st back onto left-hand needle on right-side rows, k 11 complete “teeth,” ending with Row 89.

Finishing

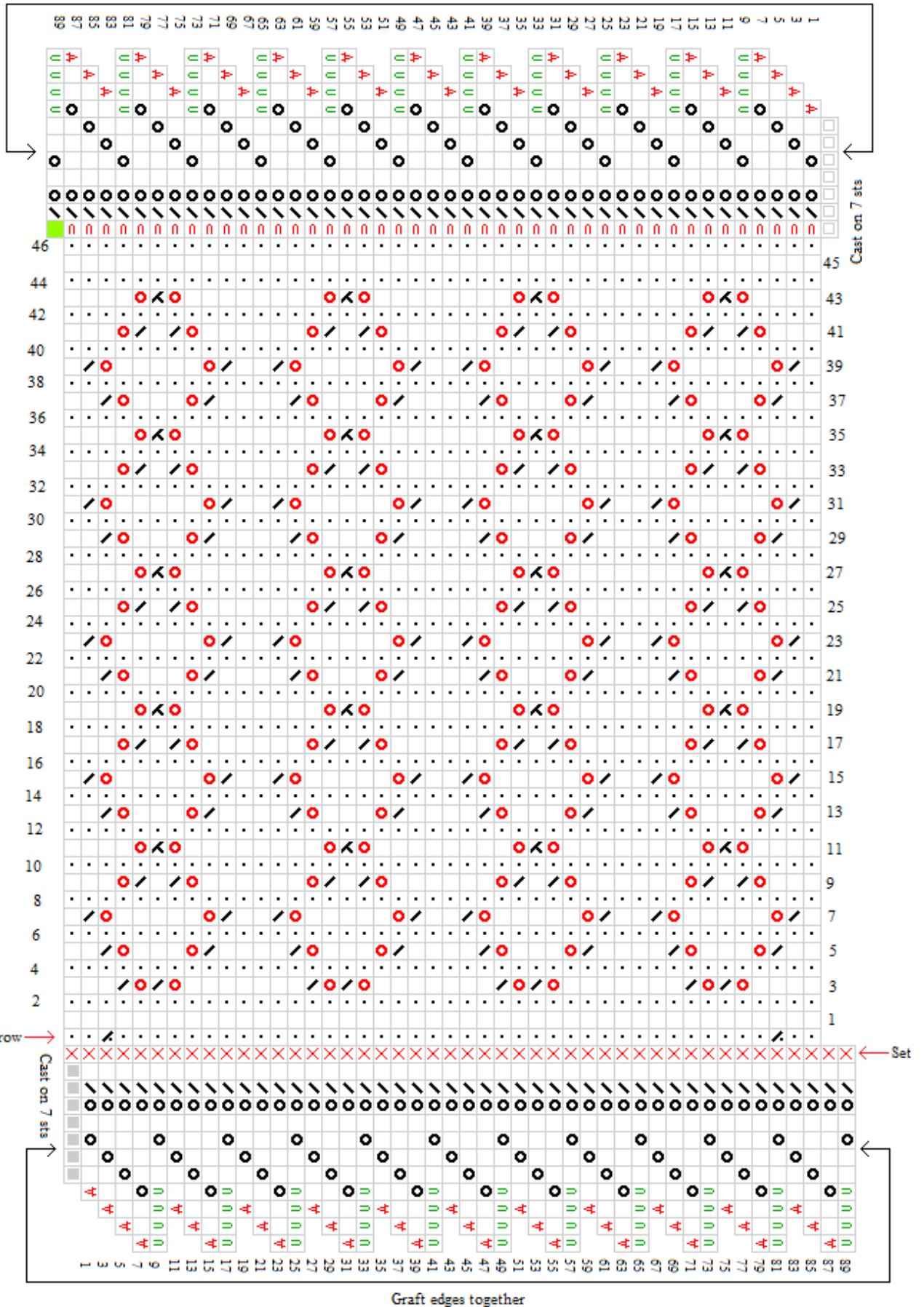
Pick up 7 sts from the base of the 7 CO sts (top border). Graft Lace Border (top border) edges tog; transfer sts from holder onto needles (lower border) and graft them tog. When there are 2 sts left, sl 1 over the other— 1 st remain. Cut a short piece of yarn and tie a knot through remain st to prevent it from raveling. Weave in loose ends. Block (optional). Steam and dry.



ABBREVIATIONS

beg –begin	patt – pattern	yo – yarn over
BO – bind off	pwise – purlwise as if to purl	WS – wrong
CO – cast on	RS – right side	side
k – knit	sl – slip	p2tog – purl 2
k2tog – knit 2 stitches together	st(s) – stitch (es)	sts together
k3tog – knit 3 stitches together	tog - together	
p – purl	wyf – with yarn in front	

Graft edges together



KEY

- k
- p
- yo
- k2tog
- k3tog
- p2tog
- k last border st tog with 1 body st and return st to left needle
- BO 1st
- pick up st
- sl 1 pwise wyf
- CO
- backward-loop CO
- use short-rows to add rows to border